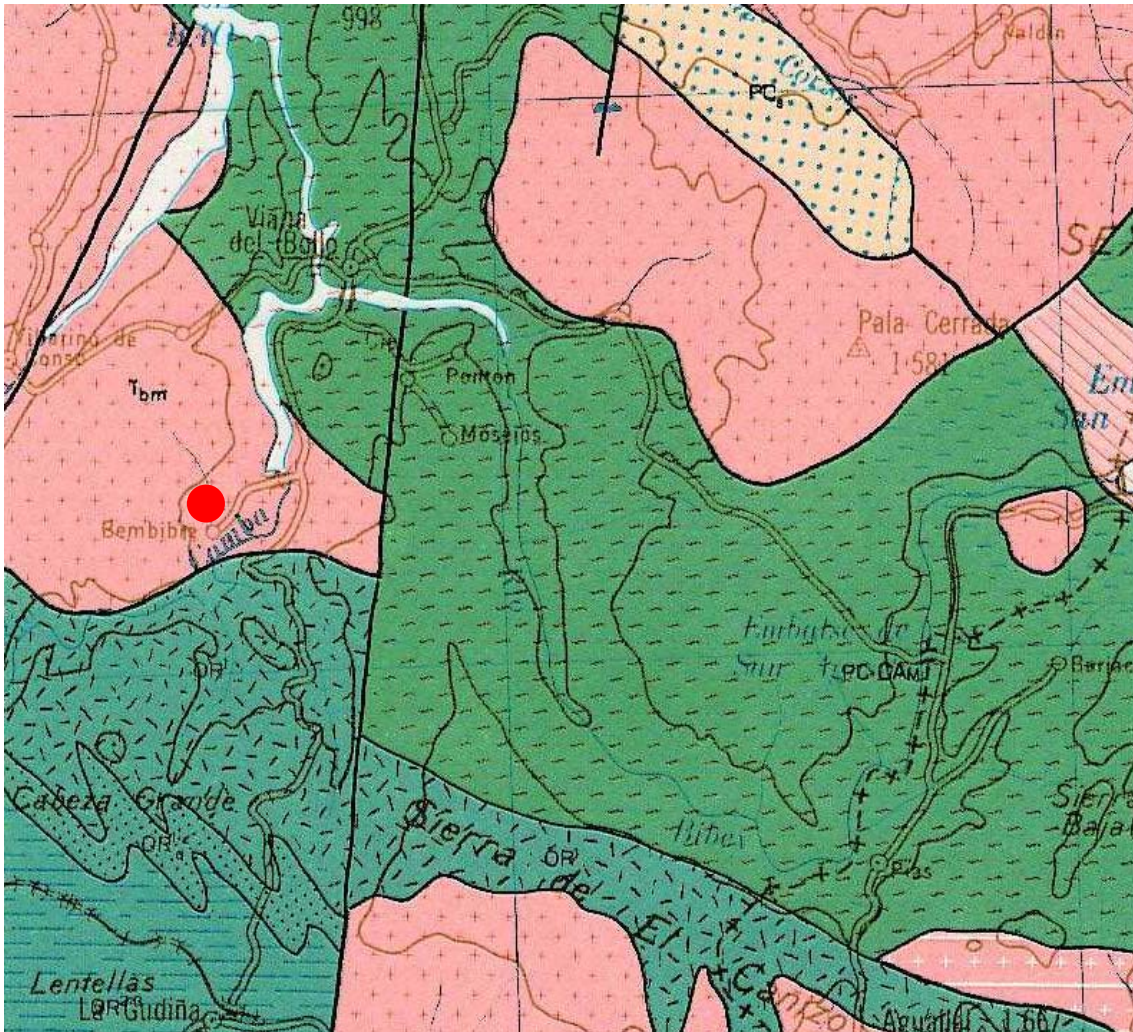
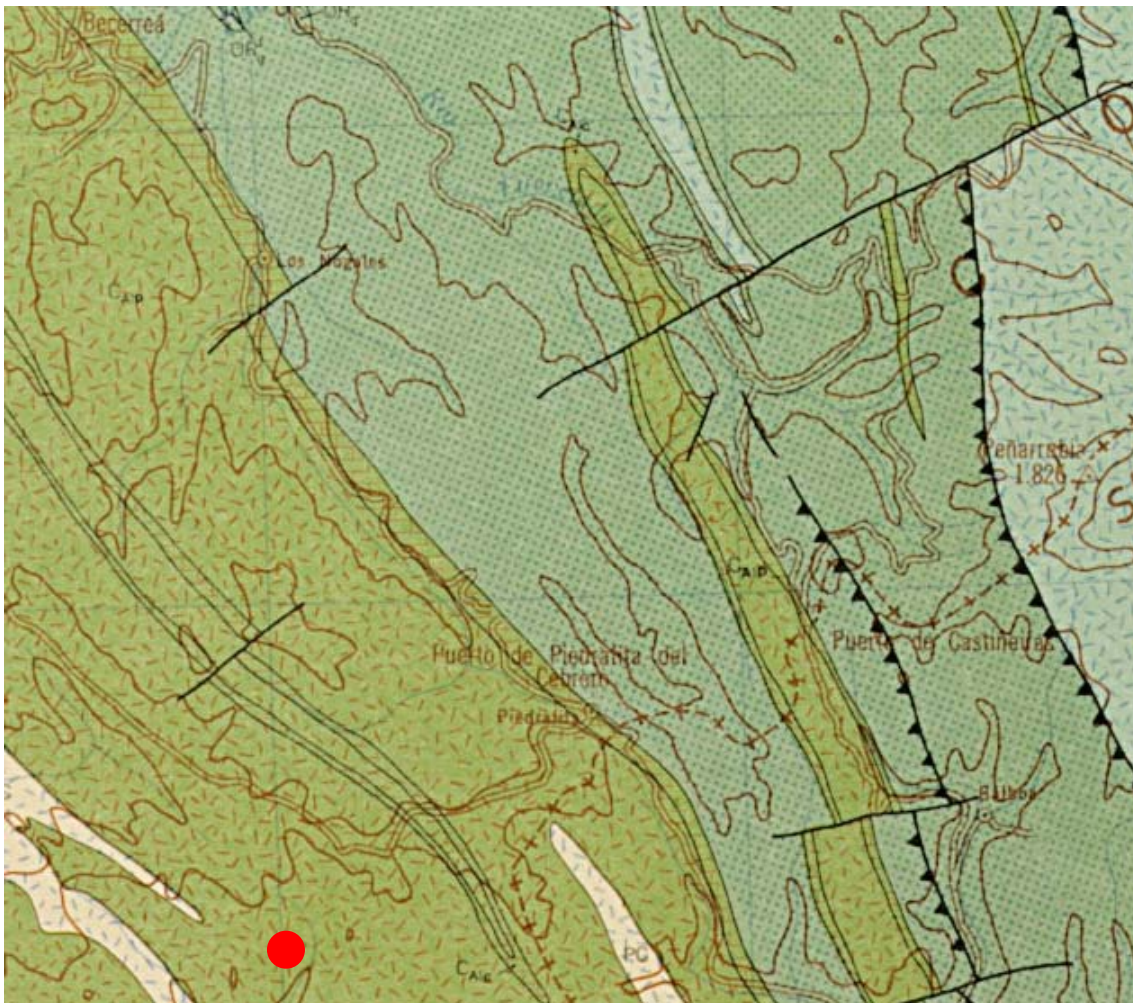


Balneario de Bembibre (Hoja 1:200.000 n° 18 Ponferrada)



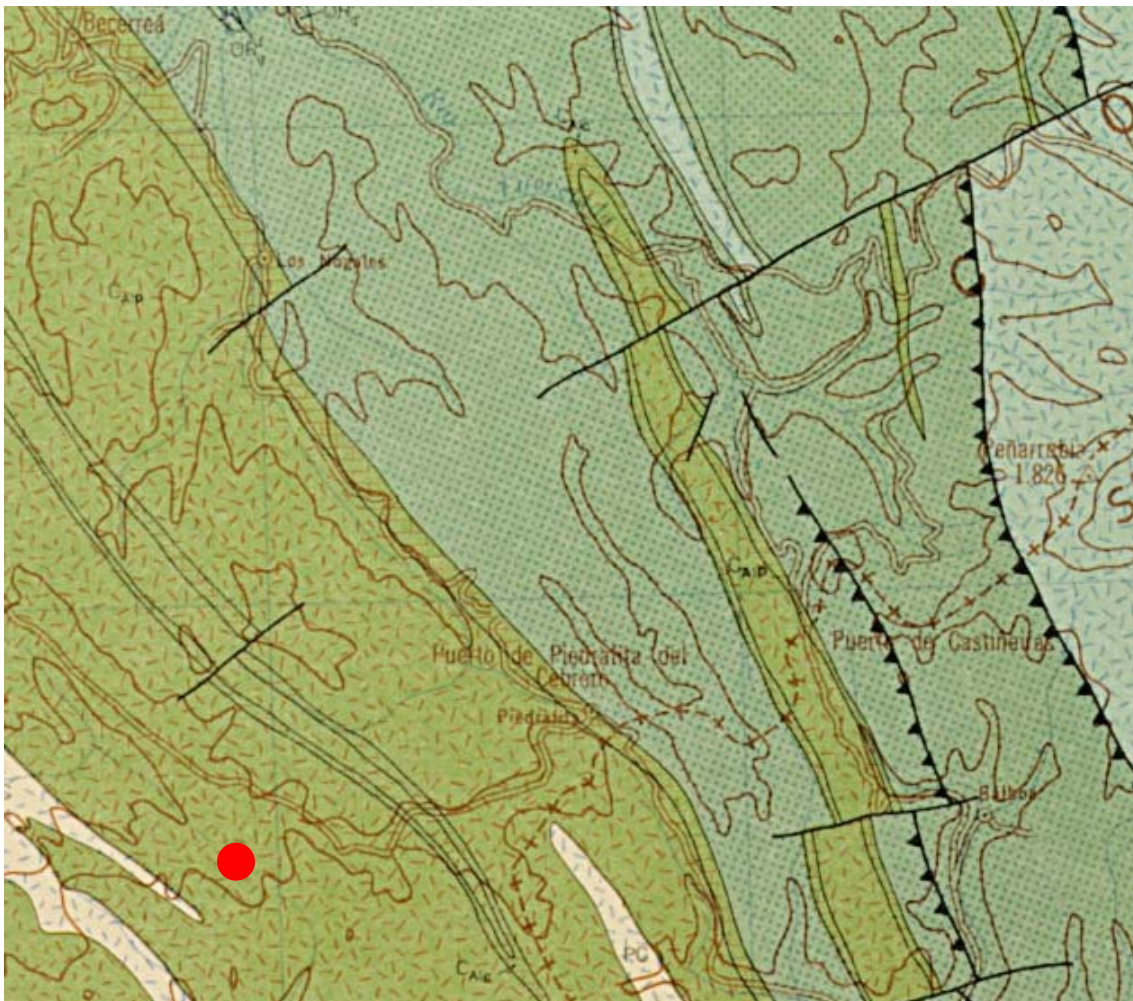
Granito de 2 micas

Fonte do Muíño (Hoja 1:200.000 n° 9 Cangas de Narcea)



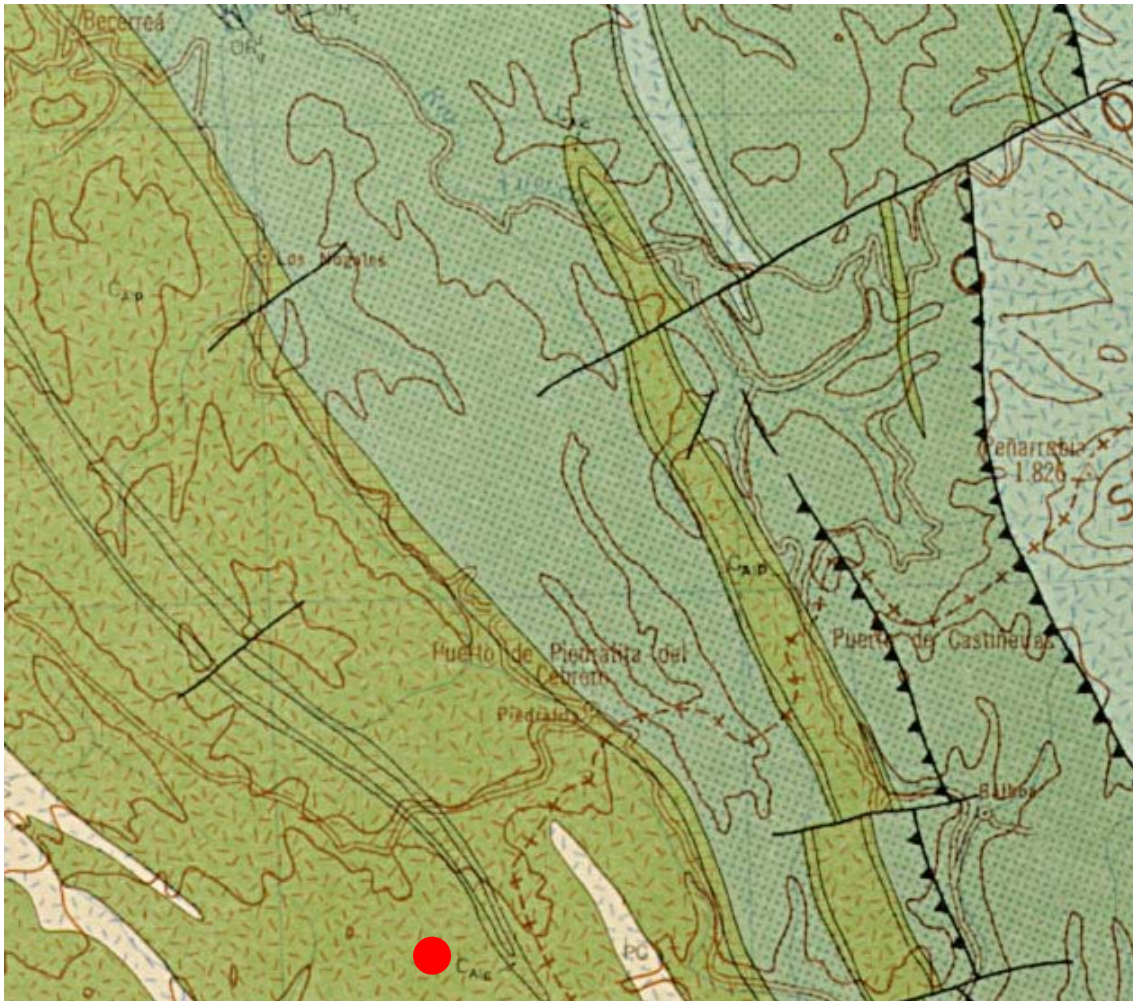
Areniscas y pizarras

Fonte de Valdefariña (Hoja 1:200.000 nº 9 Cangas del Narcea)



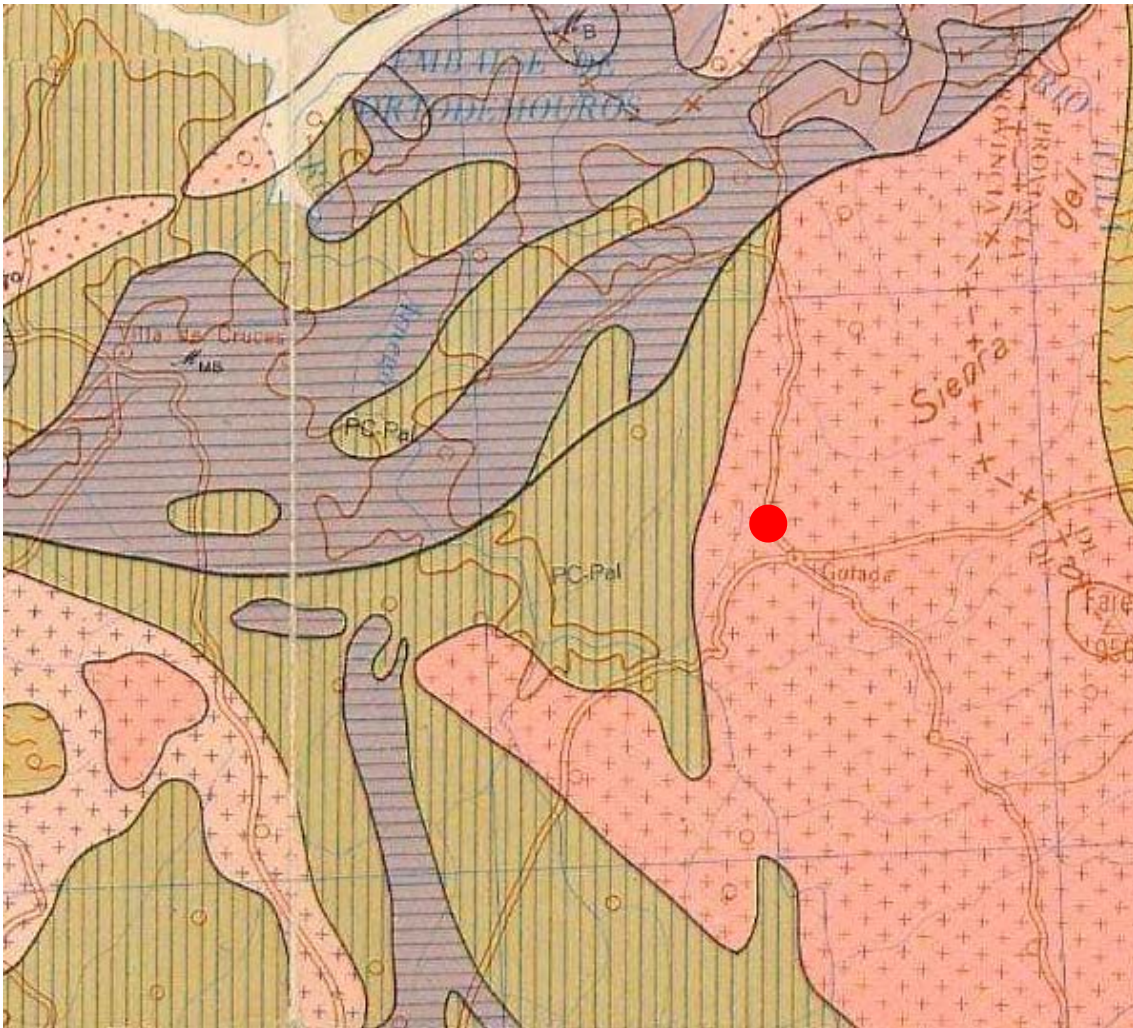
Areniscas y pizarras

Fonte de Veiga de Foxo (Hoja 1:200.000 n° 9 Cangas del Narcea)



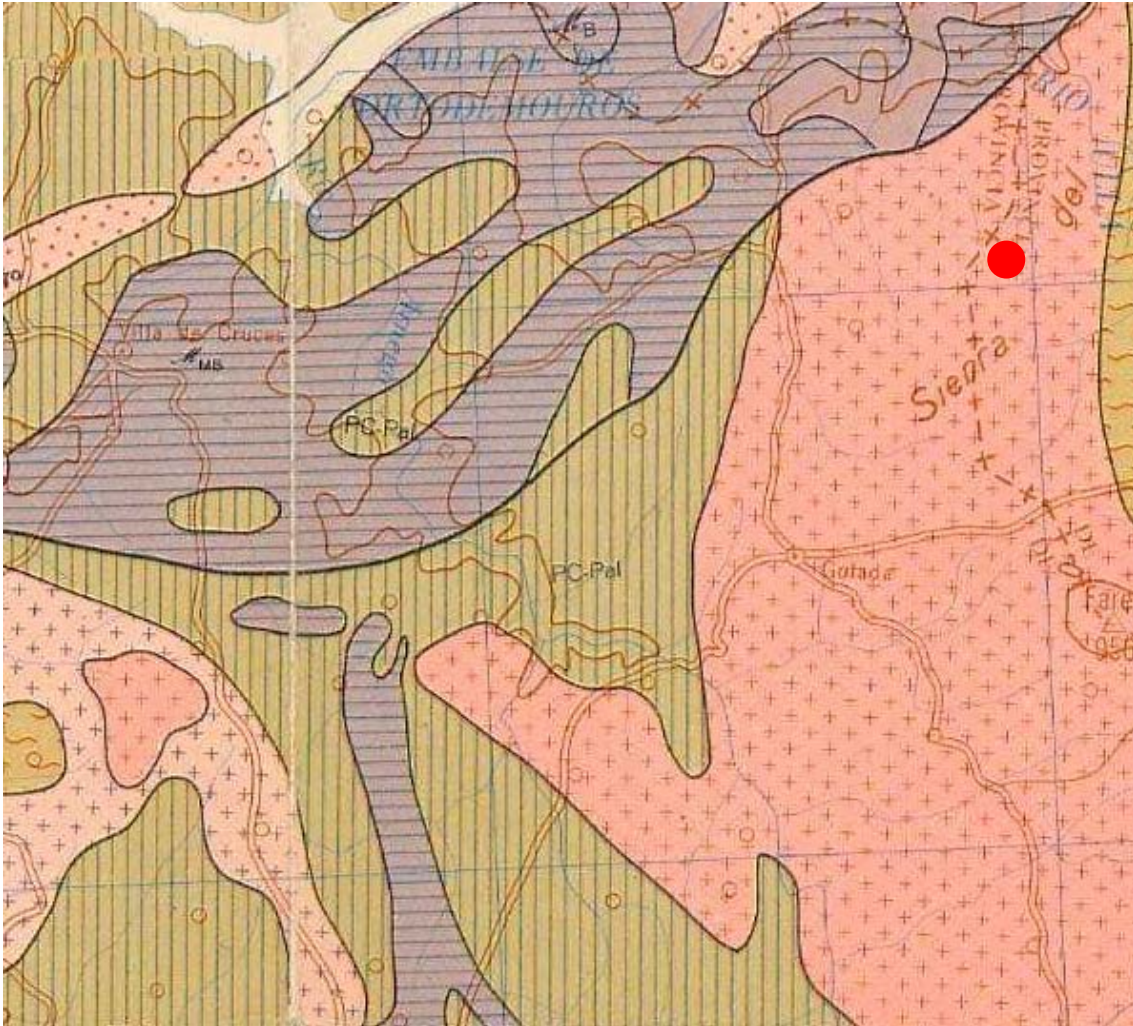
Areniscas y pizarras

Fonte Deza (Hoja 1:200.000 n° 8 Lugo)



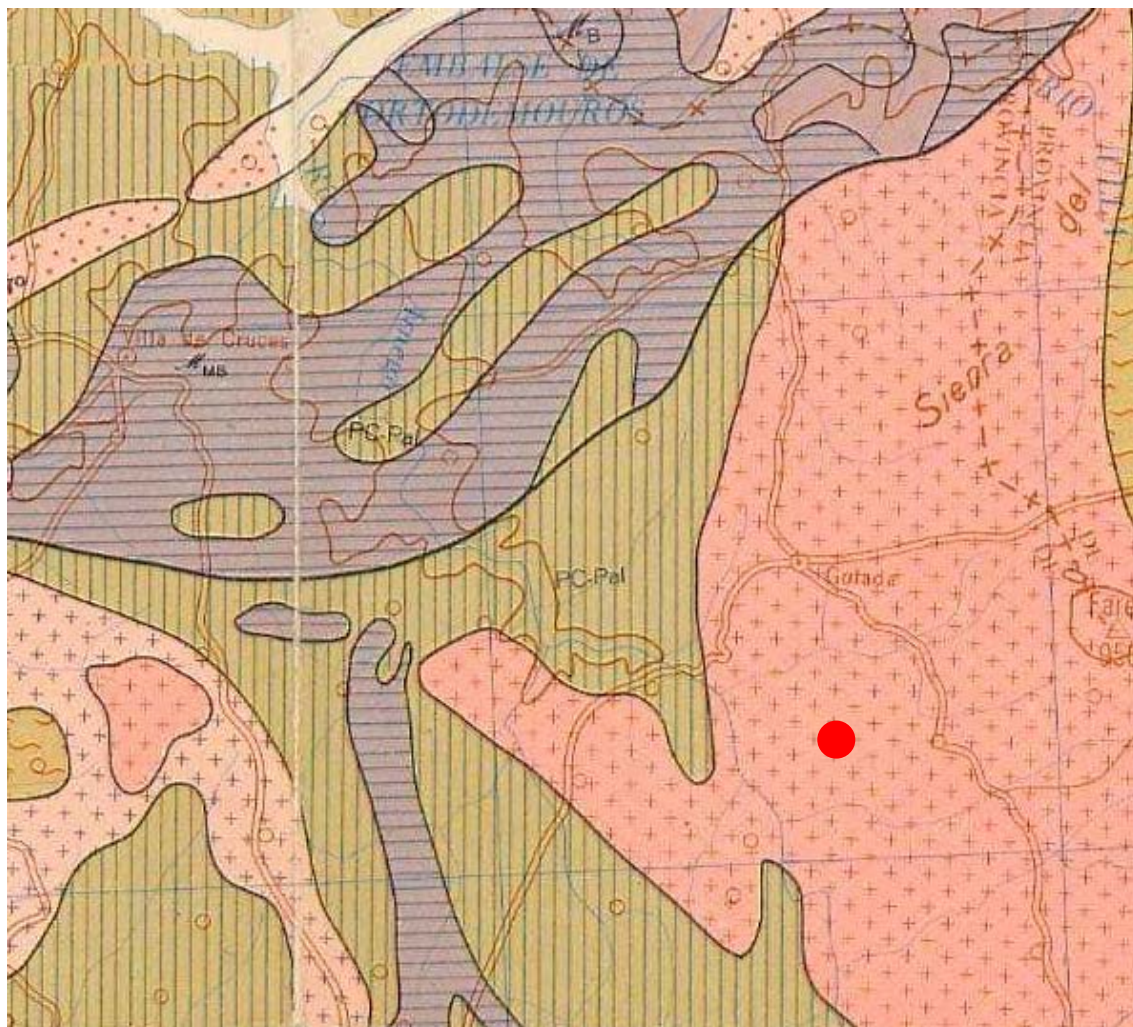
Granito de dos micas

Balneario de Augas Frádegas (Hoja 1:200.000 n° 8 Lugo)



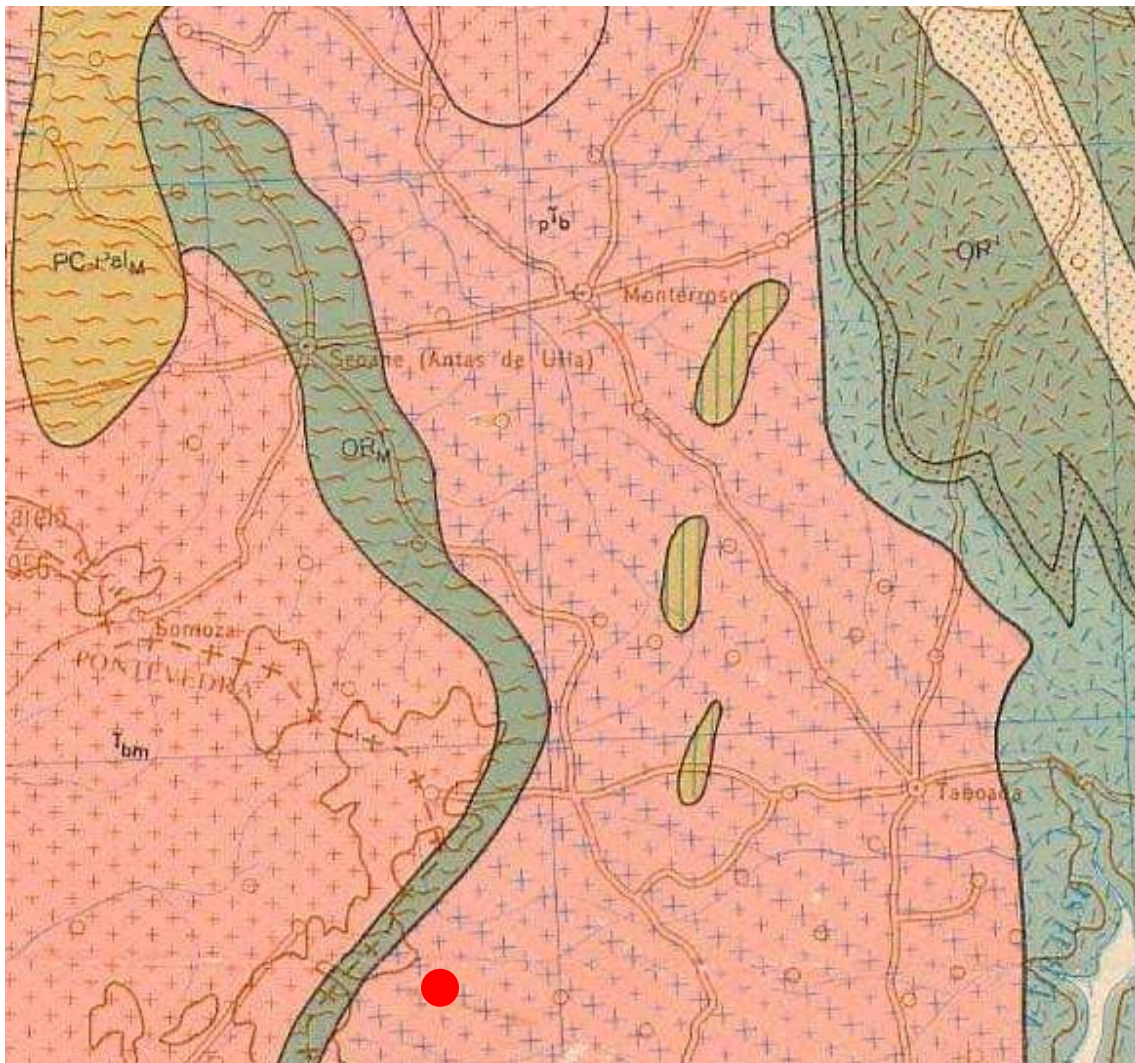
Granito de dos micas

Caldelas de Vilariño (Hoja 1:200.000 n° 8 Lugo)



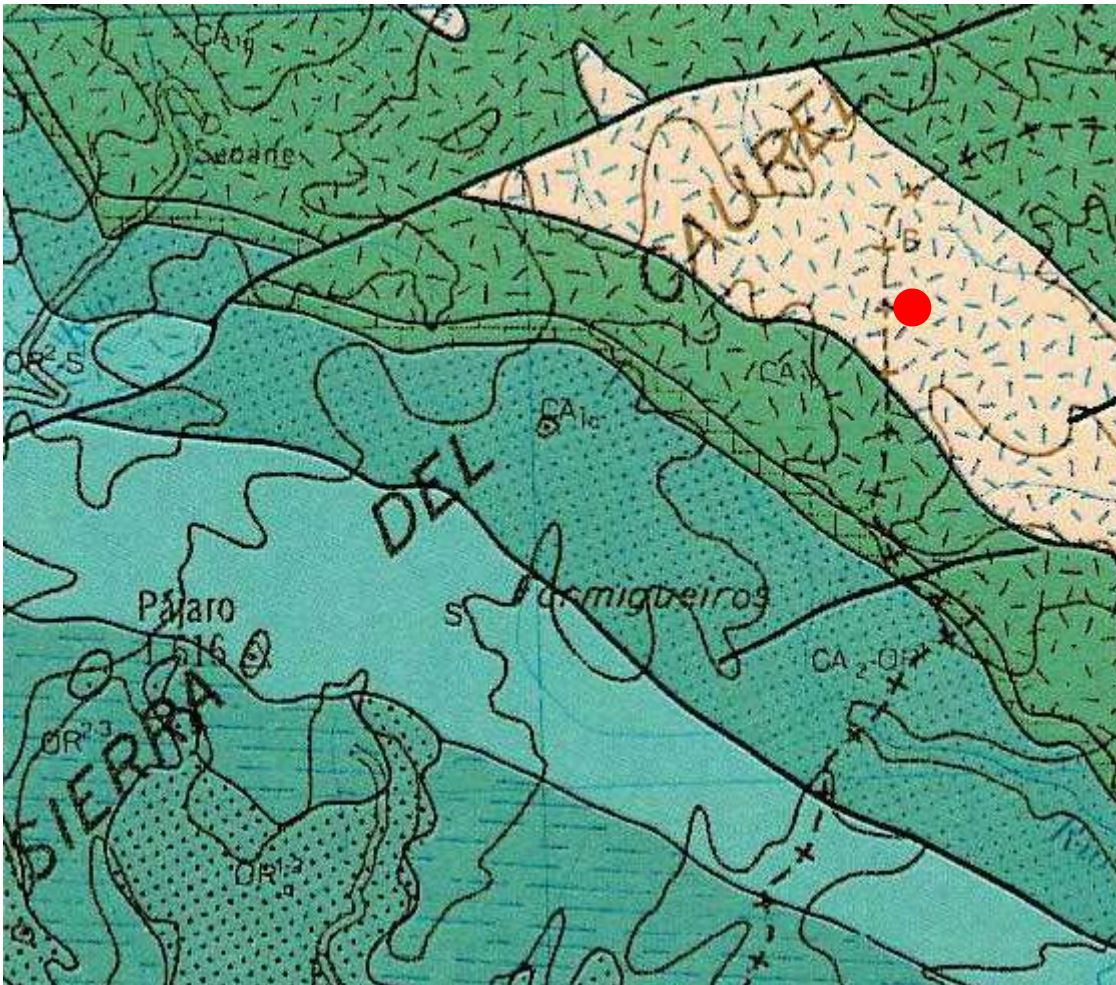
Granito de dos micas

Balneario de Mouriscados (Hoja 1:200.000 n° 8 Lugo)



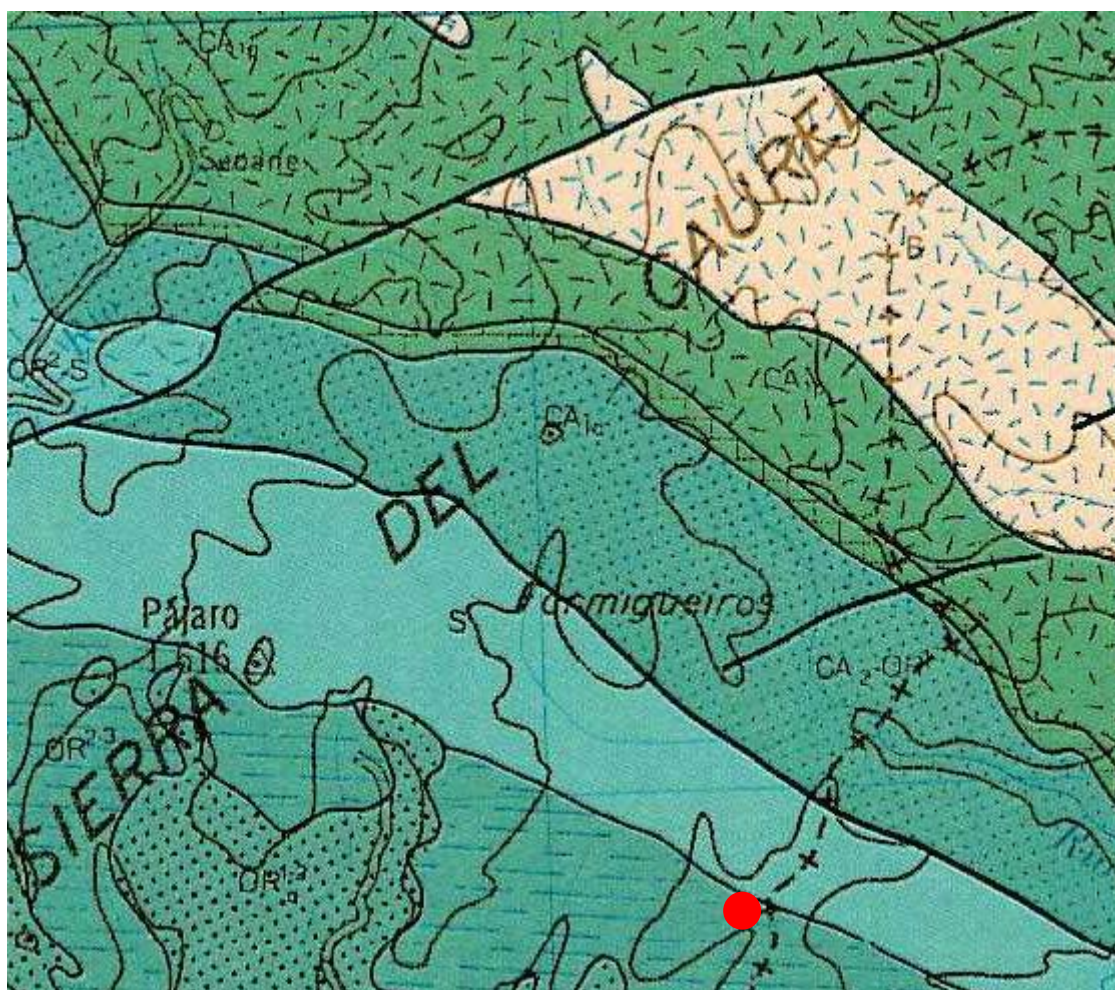
Granito de dos micas

Rogueira Blanca y Rogueira Vermella (Hoja 1:200.000 n° 18 Ponferrada)



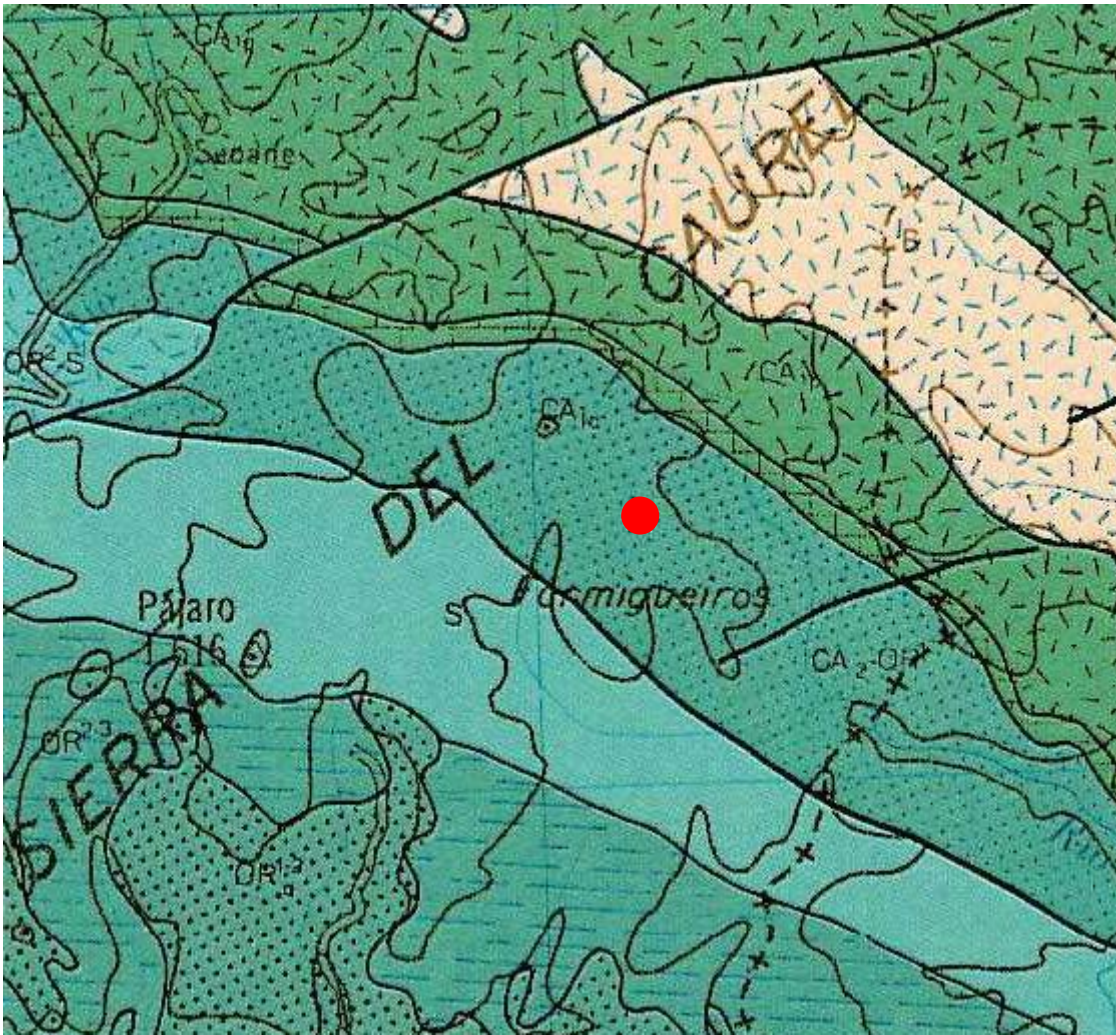
Rocas metamórficas del precámbrico

Fonte Forgas (Hoja 1:200.000 n° 18 Ponferrada)



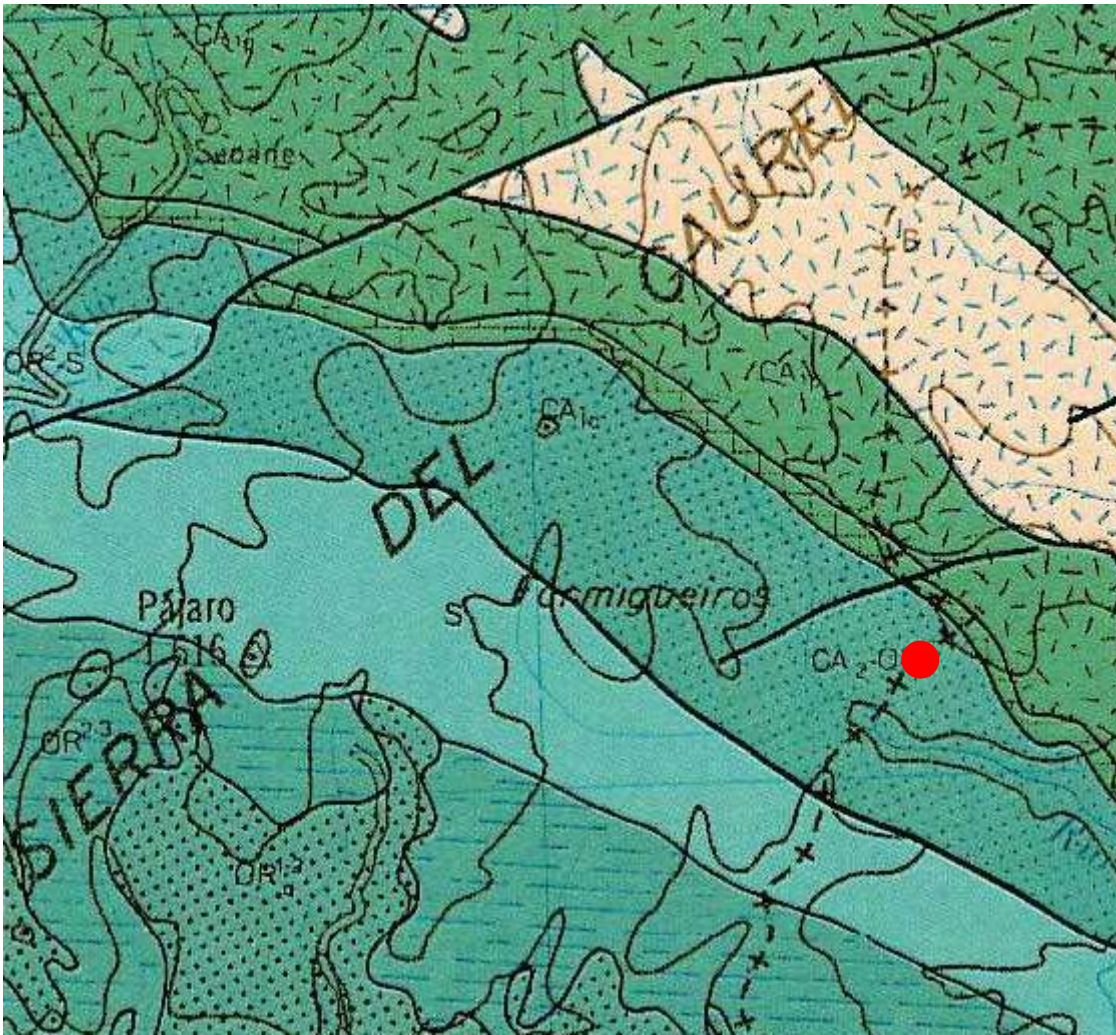
Pizarras del Ordovícico

Fonte do Fedo (Hoja 1:200.000 n° 18 Ponferrada)



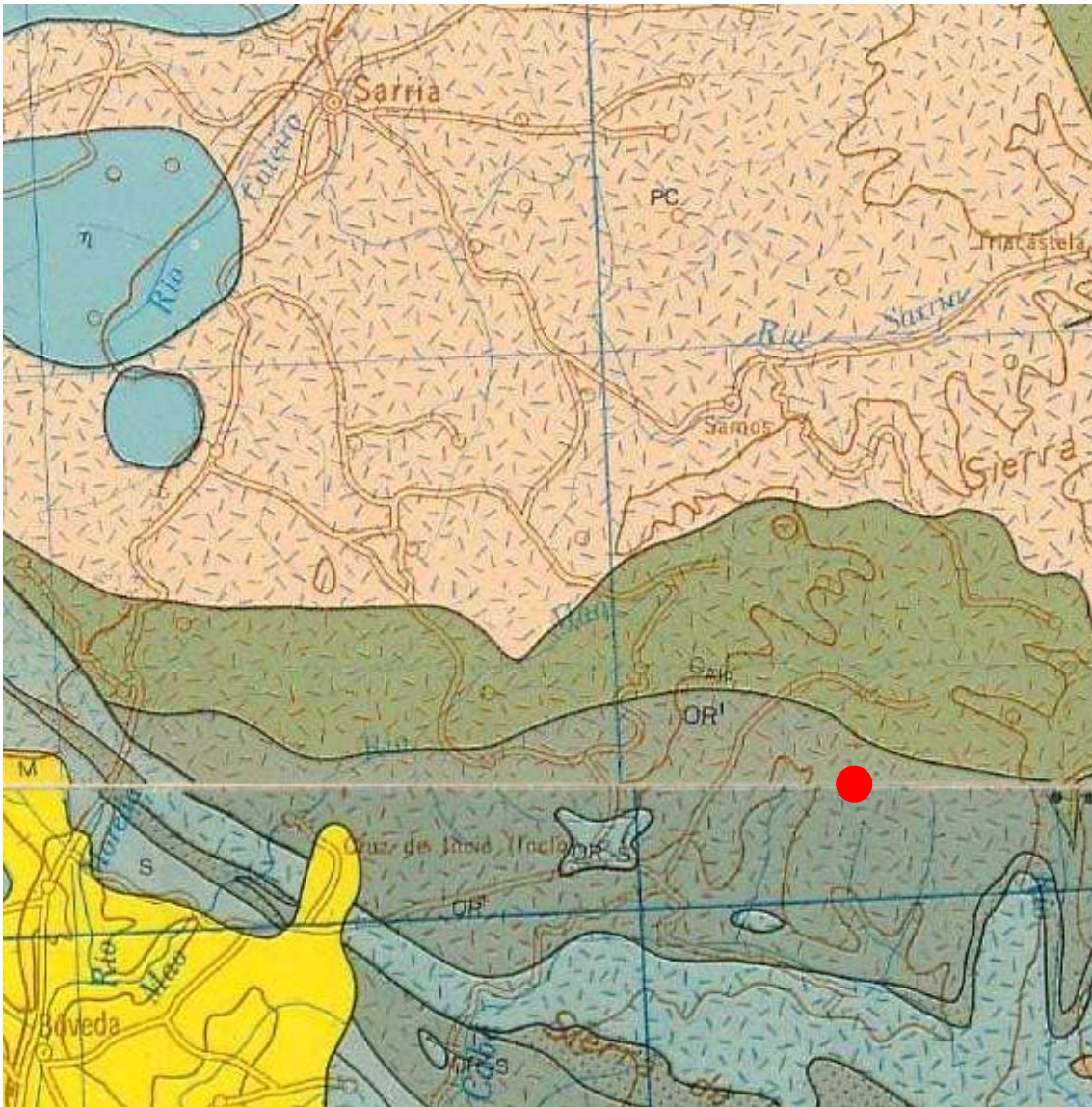
Pizarras y areniscas (Ordovícico/Cámbrico)

Fonte da Cova (Hoja 1:200.000 n° 18 Ponferrada)



Pizarras y areniscas (Ordovícico/Cámbrico)

Balneario do Incio (Hoja 1:200.000 n° 8 Lugo)



Pelitas Orogénicas